



Road & Street Luminaires

RIO XS G2

www.pelsan.com.tr

Rio Xs G2



Wide Power Range 50-60-80-100W



IP66, Dust and Waterproof



Aluminium Injection Body, IK09



IP67, ENEC Certified Driver



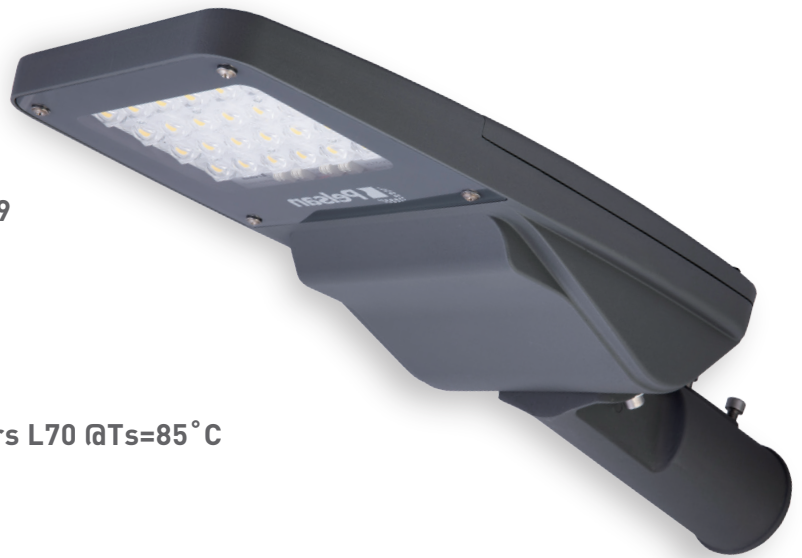
LED Chip Lifetime, +100.000 hrs L70 @Ts=85°C



IK08 Tempered Glass



Tool Free



Technical Specifications



Electrical Specifications

Powers	50-60-80-100W
Lumen	7500, 8880, 11360, 13800lm
Lumen on Per Watt	150 - 148 - 142 - 138 lm/W
LED Chip and Driver Brand	Lumileds and ENEC Certified
LED Chip Lifetime	T _s =85°C +100.000 hrs L70
LED Driver Lifetime	IP67 Driver T _c <72°C +62.000 hrs
Input Voltage	200-305V AC
Frequency	50-60Hz
Power Factor (at Full Load)	>0.95
SPD	10kV
Total Harmonic Distortion	<%10
Operating Temperature Range	-30 +45 °C
Electrical Class	Class I (Available Class II)



Optical Specifications

Lumen	7500, 8880, 11360, 13800lm
Lumen on Per Watt	150 - 148 - 142 - 138 lm/W
Lens	PMMA
Diffuser	Tempered Glass (IK08)
ULOR Level	0%
Suitable Road Class (ME1-ME6)	ME3/ME4/ME5/ME6
Color Rendering Index (CRI)	>70
Color Standard (3-5 Mac Adam Steps)	Quarter Binn
Color Temperatures	2700-4000-6500K (±150K)



Mechanical Specifications

Housing	Aluminium Injection
IP Protection	IP66
IK Protection	IK09 Body
Scx≤	0,093
Weight (kg)	3.5kg
RAL Code	RAL7043
Dimensions (mm)	232x567x106mm
Console Connection Side Entry	42-60mm
Console Connection Post Top	42-60mm
Console Angle	0° -5° -10° -15 °
Recommended Installation Heights (m)	4-12m

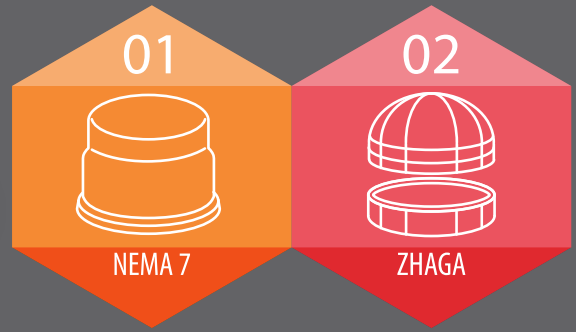
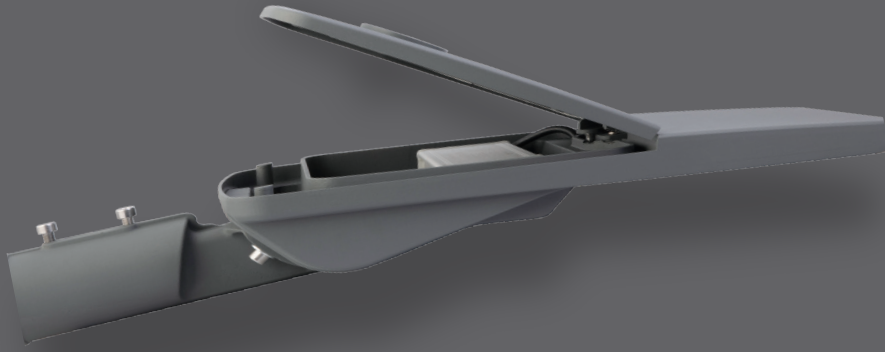


Optionals

DALI	Available
Nema7 Holder	Available
Zhaga Holder	Available
Class I or II	Available
Marine Painting	Available
2 Step Dim	Available
1-10V	Available
External SPD (Up to 10kV)	Available

Certifications and Reports	60598-2-3, LM79, LM80, TM21, IP66, IK08-09, CE
Warranty	5 Years

Flexible Design

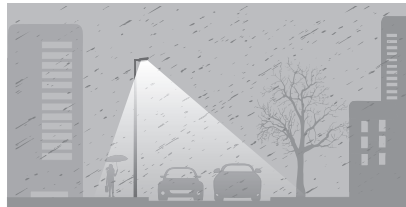
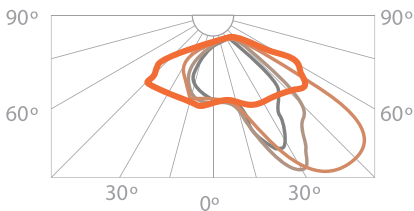


Optical Solutions in Line with Different Fields of Application

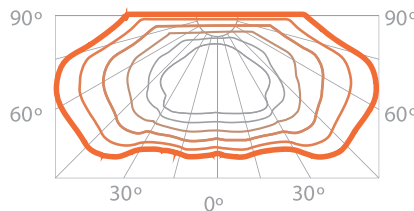
Rio road and street luminaire offers alternative optical solutions in accordance with the specifications of TEDAŞ and lighting classes in different fields of application



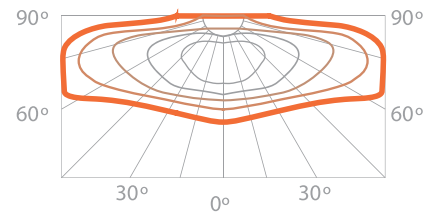
Optical solutions suitable for ME-CE class urban road-street illuminations



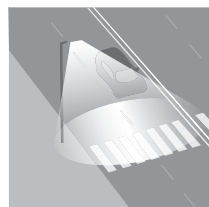
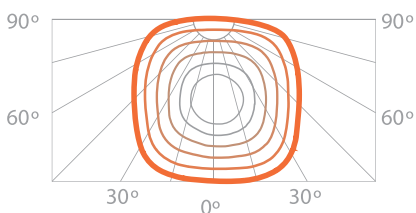
MEW class optical solutions suitable for the lighting of asphalt highways with high luminous reflectivity.



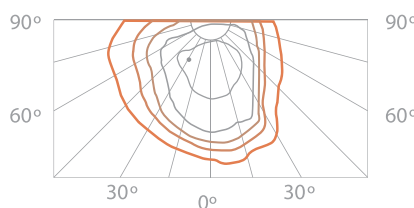
Optical solutions suitable for CE and S class fields of application in cities.



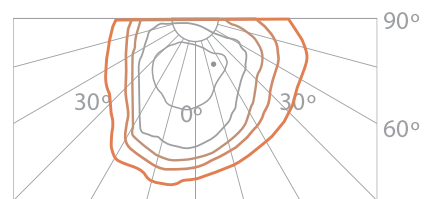
Optical solutions suitable for Square-Environment-General Lighting class

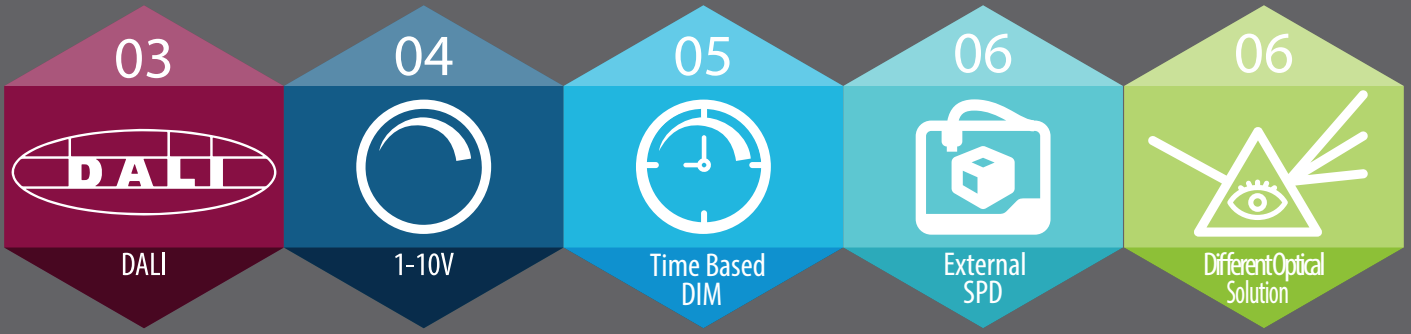


Optical solutions suitable for crosswalk lightings



Optical solutions suitable for crosswalk lightings



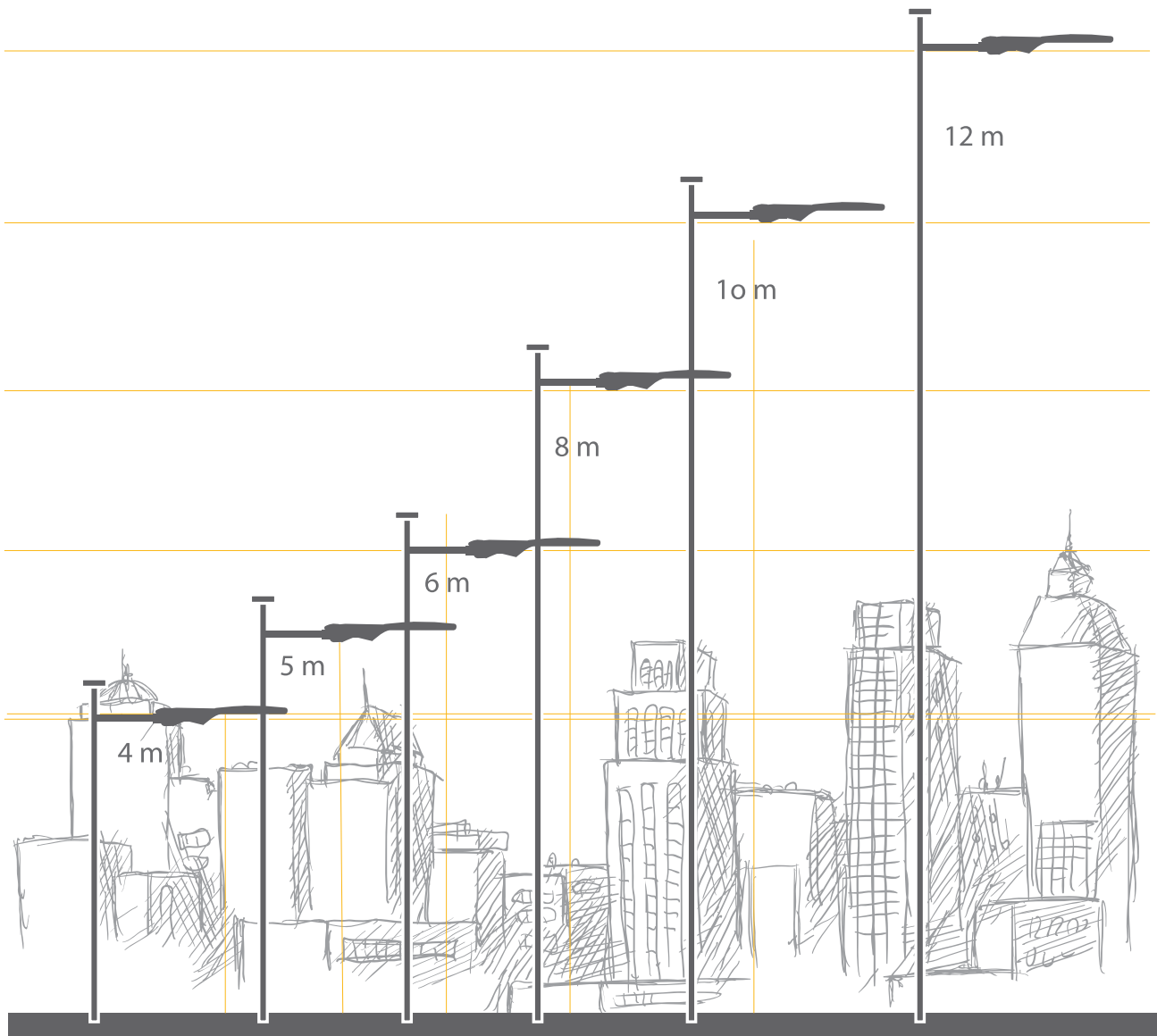


Optional Usage Option According to Different Heights



Rio LED road and street luminaires offer alternative options with pole heights between 4-12m and different power -lumen output choices.

Power	Recommended Pole Heights
30W	4-5m
50W	4-6m
60W	5-8m
80W	6-10m
100W	8-12m



Pelsan



All your lighting needs in one adress.

www.pelsan.com.tr

info@pelsan.com.tr | export@pelsan.com.tr

HEAD OFFICE

Çerkeşli O.S.B.
İmes 5. Cadde No:12
Dilovası / Kocaeli - TÜRKİYE



[/PelsanAydinlatma](#)



[pelsan-aydinlatma](#)



[pelsan aydinlatma](#)



[/pelsanaydinlatma](#)



[/PelsanLight](#)

P : +9(0850) 460 75 76

F : +9(0216) 364 60 15