

HIGH POWER PROFESSIONAL FLOODLIGHT

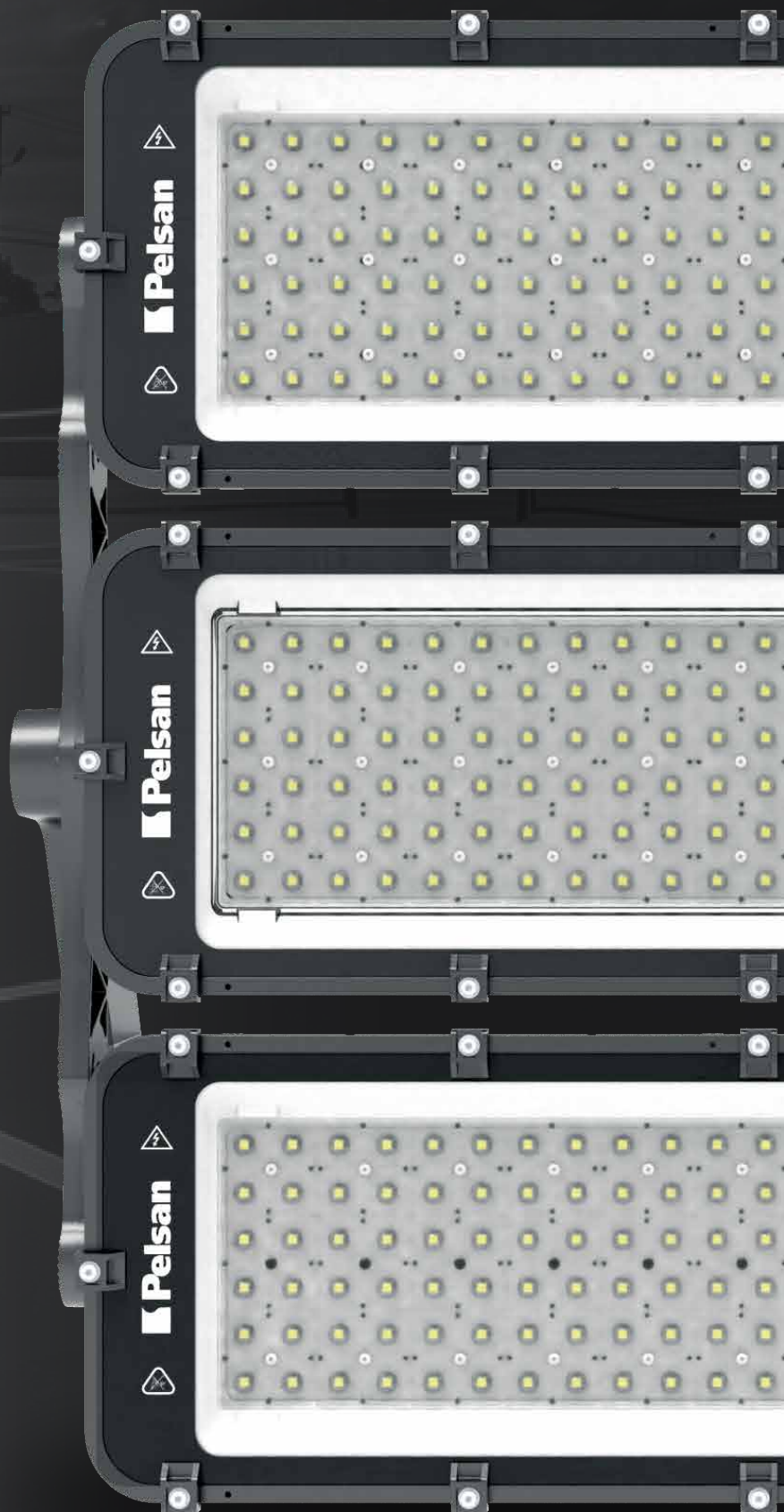
CRUZO G2

www.pelsan.com.tr



HIGH POWER PROFESSIONAL
FLOODLIGHT

CRUZO G2



High Power Professional Floodlight for large areas and sports fields

CRUZO G2



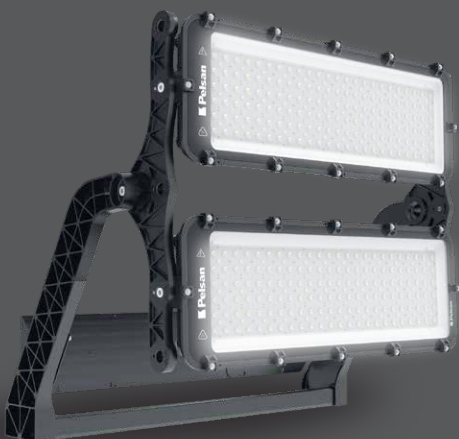
With its G2 version, the renewed Cruzo is now a professional solution for stadiums, squares and large areas with a wide power option up to 1800W and a wide lumen package of up to 250.200lm.

Flexible

Cruzo G2 offers many features in one family, suitable for different conditions and different mast heights, which can be developed with automation options.

- 1 Module (300-600W) / 2 Module (800-1200W) / 3 Module (1000-1800W)
- 10°/17°/30°/60°/90°/Asymmetric lens options
- High protection in coastal areas with marine paint
- Wide range of automation options (DMX RDM, DALI, 1-10V, Step DIM)
- CRI90, Flicker Free
- Class I/II option

Wide Optic Design



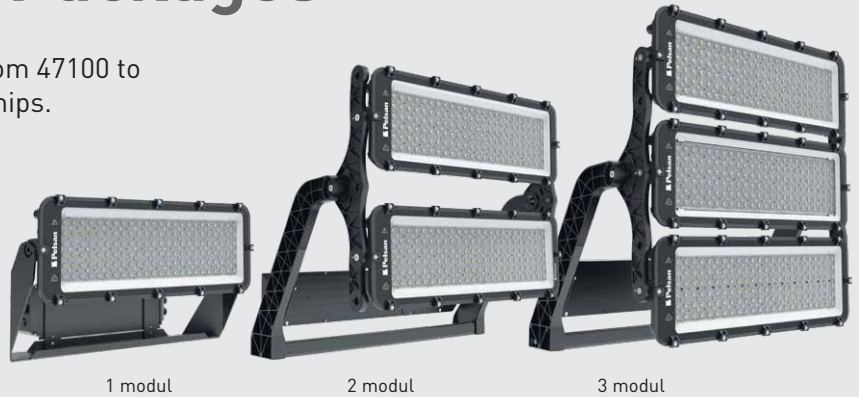
Cruzo G2 offers 42 optical options for different application areas offers a definitive solution in a family.

- Angle adjustable aluminium injection moulded brackets
- $\pm 30^\circ$ adjustable angle of each module
- Wide range of lens options from 10° to 90° and asymmetric options
- Standard 7 different lumen packages, customisable light output

Diverse Lumen Packages

Cruzo G2 offers wide lumen packages from 47100 to 250200 with high efficiency Power LED chips.

1 module : 47100lm - 83400lm
2 modules : 128000lm - 175200lm
3 modules : 222000lm - 250200lm



Thermal Heat Resistance

During the use of luminaires, heating occurs in the driver and pcb area over time. If the heat dissipation of the components is not designed effectively, it may cause deterioration in the luminaire.

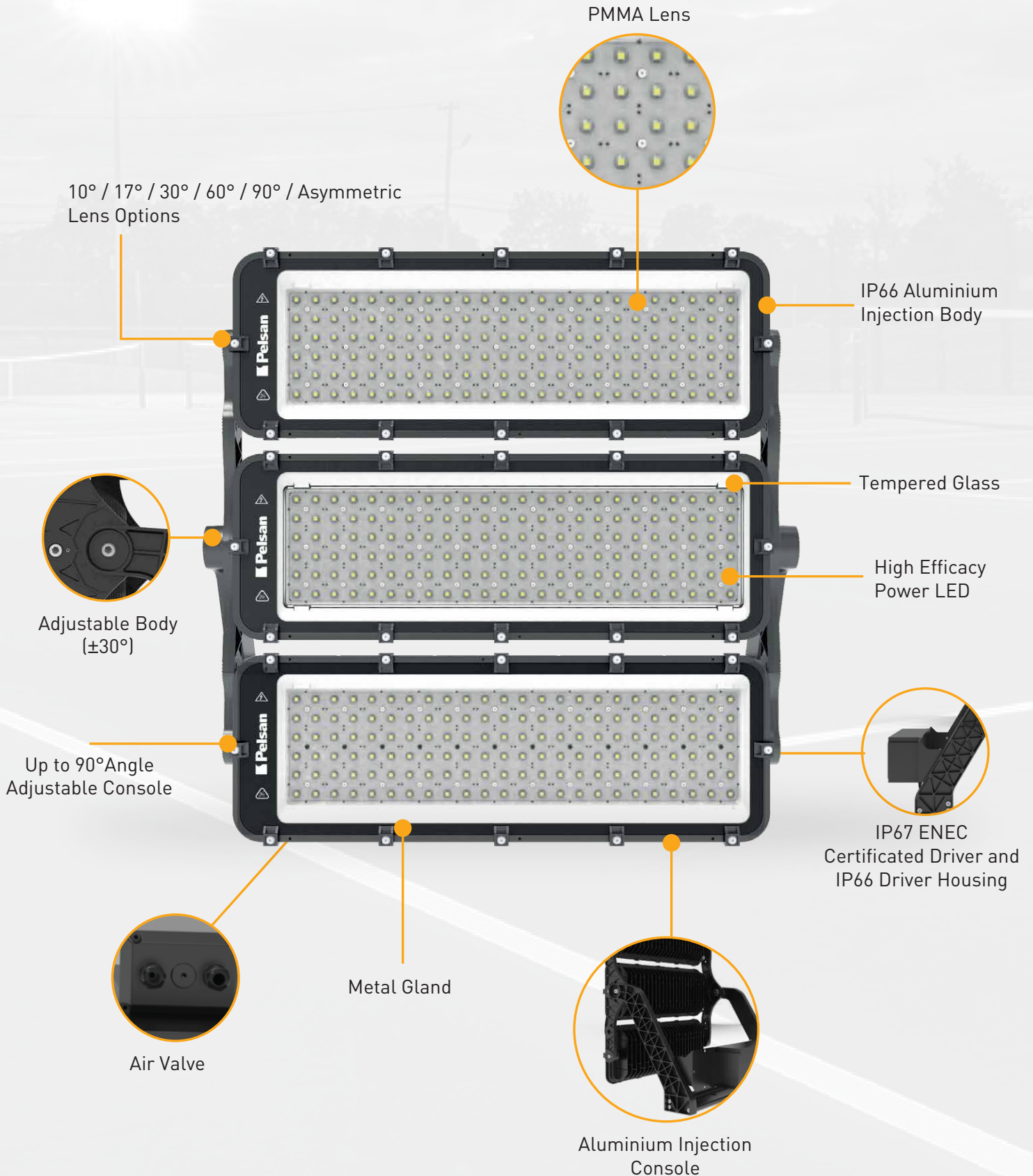
Cruzo G2 maximises thermal heat resistance with its new design. Thanks to its monolithic, federated aluminium injection body structure and separate positioning of the LED module and driver housing, it provides maximum heat dissipation.

Long Lifetime

High power floodlights operate in harsh environmental conditions such as extreme and sudden temperature changes, sudden voltage fluctuations, lightning strikes and wind.

Cruzo G2 offers long-lasting high performance with its superior and unique electrical, mechanical and thermal design.





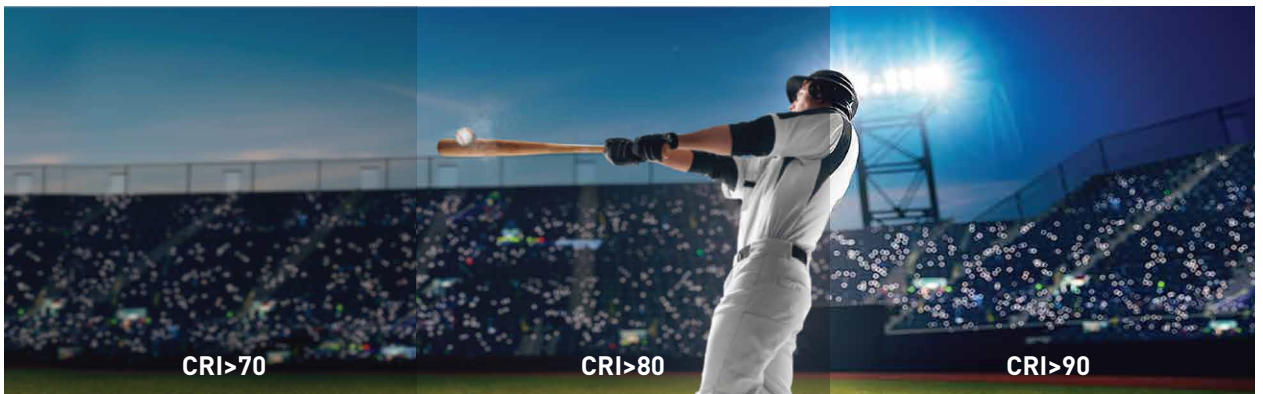
HD Boardcast



Flicker Free



CRI90

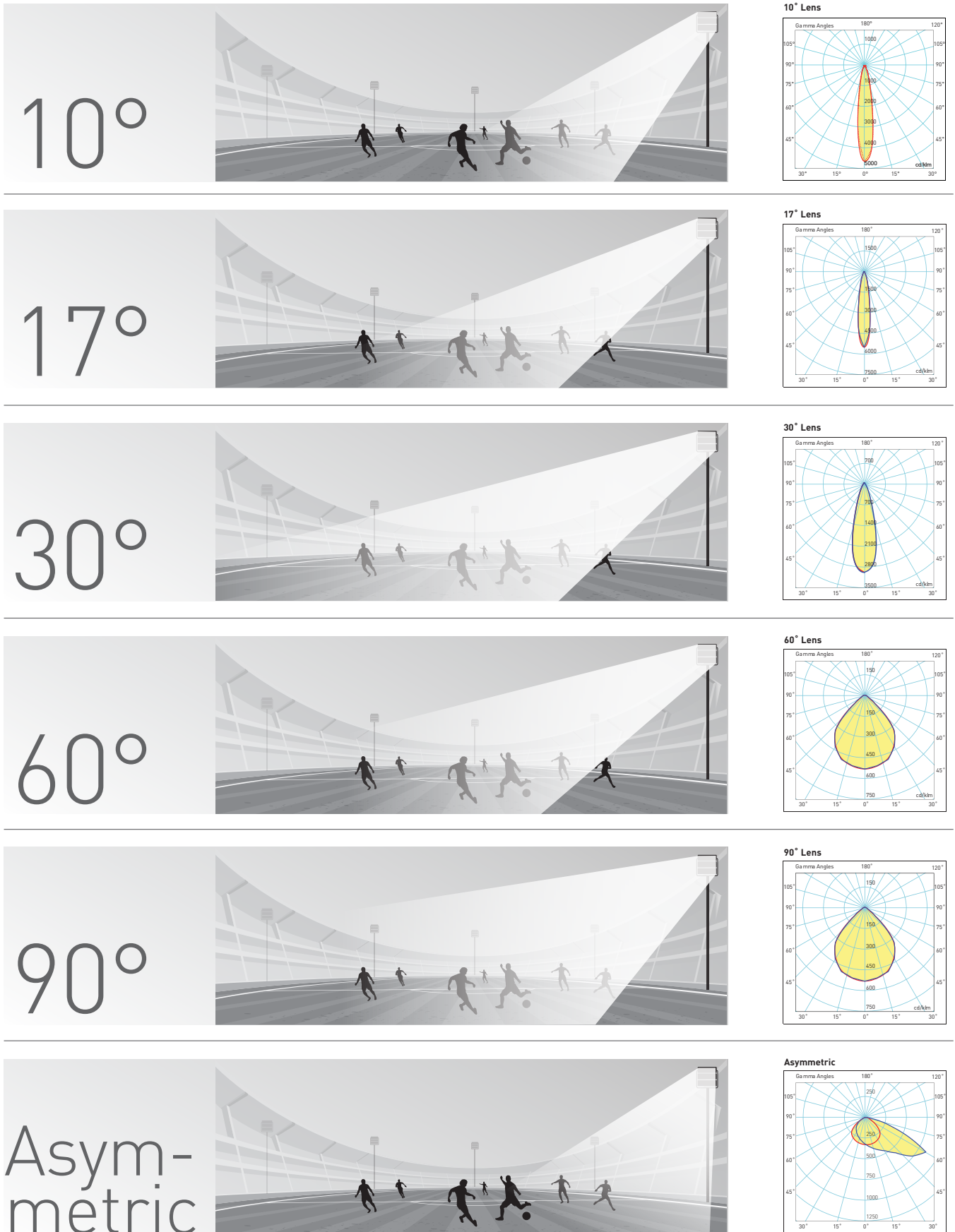


DALI, DMX RDM



Options

Wide Range of Optics





Mechanical Specifications

Body	Aluminium
IP Rating	IP66
IK Rating Body	IK09
Weight (kg)	18 - 29 - 38kg
RAL Code	7043
Dimensions (mm)	716x387x319 / 816x723x479 / 816x821x479



Electrical Specifications

Power	500-1000-1500-1800W
Luminous Flux	70.000 - 150.000 - 222.000- 250.200lm
Efficacy	140 - 150 - 148 - 139 lm/W
LED Chip and Driver Brand	Samsung - IP67 ENEC Certified Driver
LED Chip Lifetime	T _s =85°C 100.000h
LED Driver Lifetime	@T _c <72°C de 62.000
Input Voltage	220-240Vac
Frequency	50-60Hz
Power Factor	>0,95
SPD	10kV
Total Harmonik	%10
Operating Temperature	-40°C / 50°C
Class	I



Optical Specifications

Luminous Flux	70.000 - 150.000 - 222.000- 250.200lm
Efficacy	140 - 150 - 148 - 139 lm/W
Lens	PMMA
Diffuser	Tempered Glass
CRI	>70
Color Standard	Quarter Bin
Colour Temperature	4000K - 5700K - 6500K

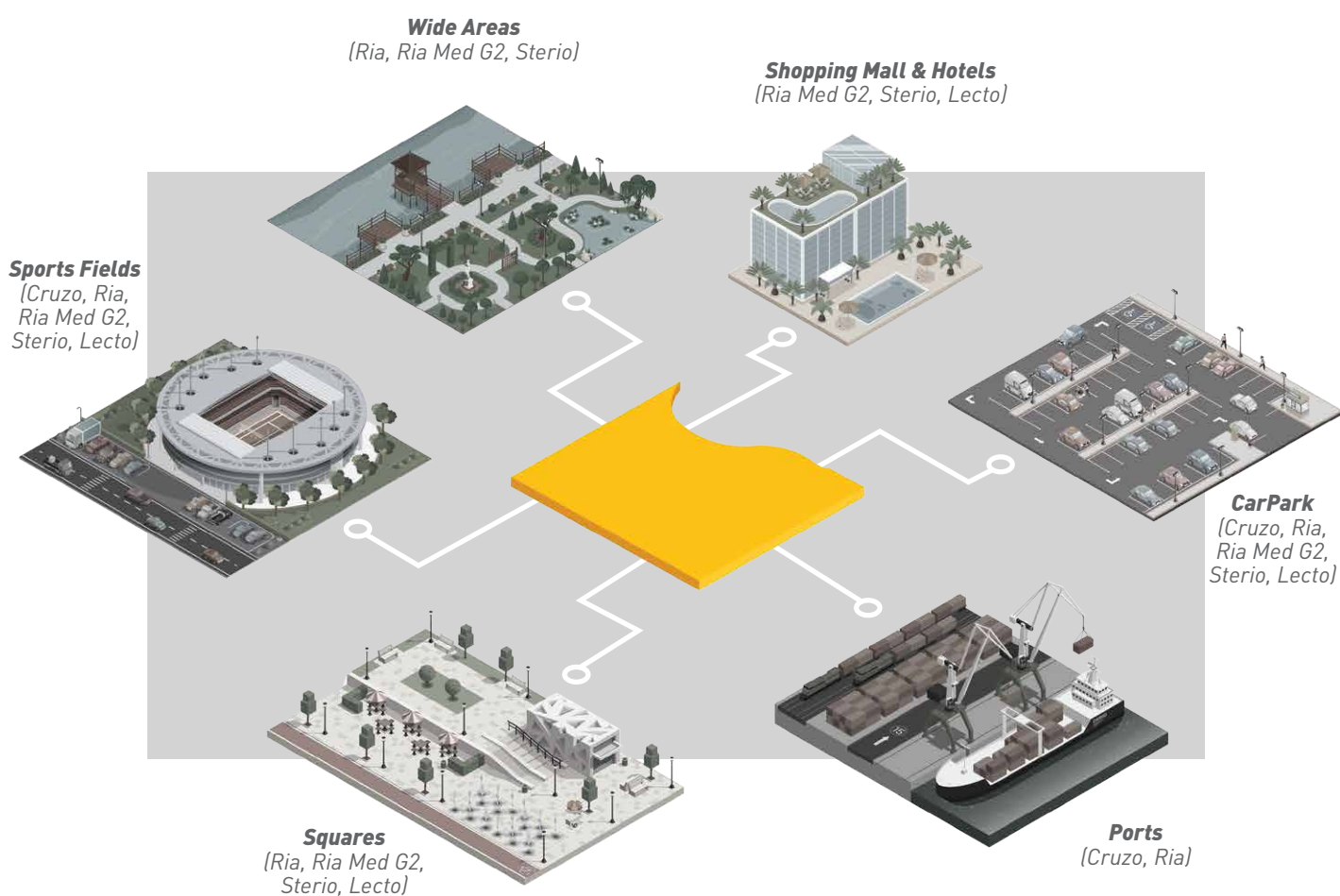


Optionals

DALI	Suitable
DMX RDM	Suitable
1-10V	Suitable
2 Step Dim	Suitable
Class I / Class II	Suitable
RAL Code	Suitable
Marine Painting	Suitable
External SPD	Suitable



Application Areas



Other Floodlights



Type	Cruzo G2	Ria Lens	Ria Reflector	Ria Reflector	Ria Med G2	Sterio	Lecto
Lumen Package	42.300lm 246.600lm	28.800lm 40.500lm	23.580lm 37.200lm	14.200lm 19.050lm	8.820lm 19.050lm	5.000lm 45.000lm	3.000lm 30.000lm
Power	300W-1800W	200W-300W	180W-300W	100W-150W	60W-150W	50W-450W	30W-300W
Efficacy	Up to 144lm/W	Up to 144lm/W	Up to 131lm/W	Up to 142lm/W	Up to 147lm/W	+100lm/W	+100lm/W
Lifetime	>62,000h	>62,000h	>62,000h	>62,000h	>62,000h	>30,000h	>30,000h
Warranty	2 Year	5 Year	5 Year	5 Year	5 Year	2 Year	2 Year
Optic	10°/30°/60°/90° Asymmetric Lens	30°/60°/90° Asymmetric Lens	Symmetric Asymmetric Reflector	Symmetric Reflector	30°/60°/90° Asymmetric Lens	Symmetric Reflector	Symmetric/ 120° Reflector
OPTIONS	DALI	✓	✓	✓	✓	✓	
	2 Step	✓	✓	✓	✓	✓	
	1-10V	✓	✓	✓	✓	✓	
	Photocell						
	Electrical Protection	I/II	I/II	I/II	I/II	I/II	I
	RAL Code		✓	✓		✓	
	Marine Painting	✓	✓	✓	✓	✓	

Pelsan



All your lighting needs in one adress.

www.pelsan.com.tr

info@pelsan.com.tr | export@pelsan.com.tr

HEAD OFFICE

Çerkeşli O.S.B.
İmes 5. Cadde No:12
Dilovası / Kocaeli - TÜRKİYE



[/PelsanAydinlatma](#)



[pelsan-aydinlatma](#)



[pelsan aydinlatma](#)



[/pelsanaydinlatma](#)



[/PelsanLight](#)

P : +9(0850) 460 75 76

F : +9(0216) 364 60 15