



Road & Street Luminaires

---

# RIO XS G2

[www.pelsan.com.tr](http://www.pelsan.com.tr)

# Rio Xs G2



Wide Power Range 50-60-80-100W



IP66, Dust and Waterproof



Aluminium Injection Body, IK09



IP67, ENEC Certified Driver



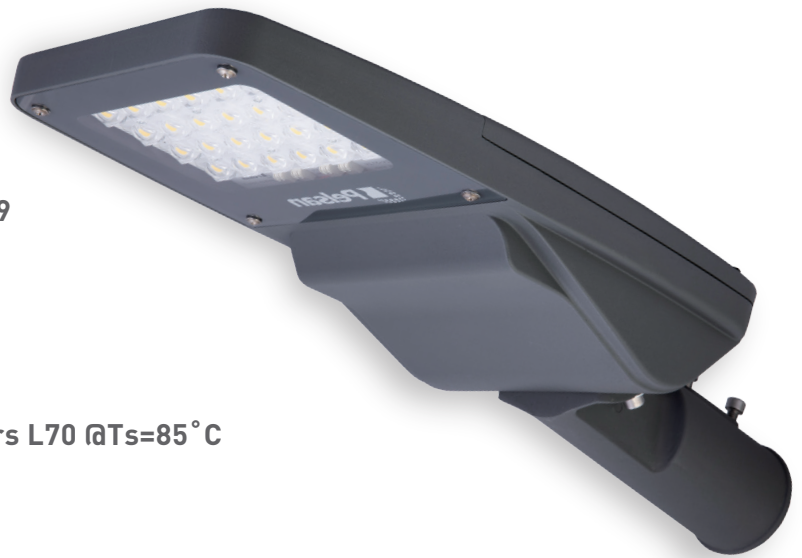
LED Chip Lifetime, +100.000 hrs L70 @Ts=85° C



IK08 Tempered Glass



Tool Free



# Technical Specifications



## Electrical Specifications

Powers	50-60-80-100W
Lumen	7500, 8880, 11360, 13800lm
Lumen on Per Watt	150 - 148 - 142 - 138 lm/W
LED Chip and Driver Brand	Lumileds and ENEC Certified
LED Chip Lifetime	T <sub>s</sub> =85°C +100.000 hrs L70
LED Driver Lifetime	IP67 Driver T <sub>c</sub> <72°C +62.000 hrs
Input Voltage	200-305V AC
Frequency	50-60Hz
Power Factor (at Full Load)	>0.95
SPD	10kV
Total Harmonic Distortion	<%10
Operating Temperature Range	-30 +45 °C
Electrical Class	Class I (Available Class II)



## Optical Specifications

Lumen	7500, 8880, 11360, 13800lm
Lumen on Per Watt	150 - 148 - 142 - 138 lm/W
Lens	PMMA
Diffuser	Tempered Glass (IK08)
ULOR Level	0%
Suitable Road Class (ME1-ME6)	ME3/ME4/ME5/ME6
Color Rendering Index (CRI)	>70
Color Standard (3-5 Mac Adam Steps)	Quarter Binn
Color Temperatures	2700-4000-6500K (±150K)



## Mechanical Specifications

Housing	Aluminium Injection
IP Protection	IP66
IK Protection	IK09 Body
Scx≤	0,093
Weight (kg)	3.5kg
RAL Code	RAL7043
Dimensions (mm)	232x567x106mm
Console Connection Side Entry	42-60mm
Console Connection Post Top	42-60mm
Console Angle	0° -5° -10° -15 °
Recommended Installation Heights (m)	4-12m

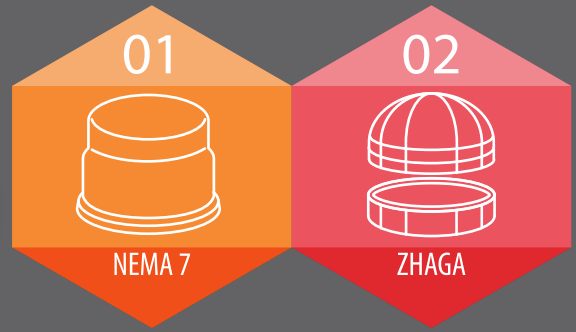
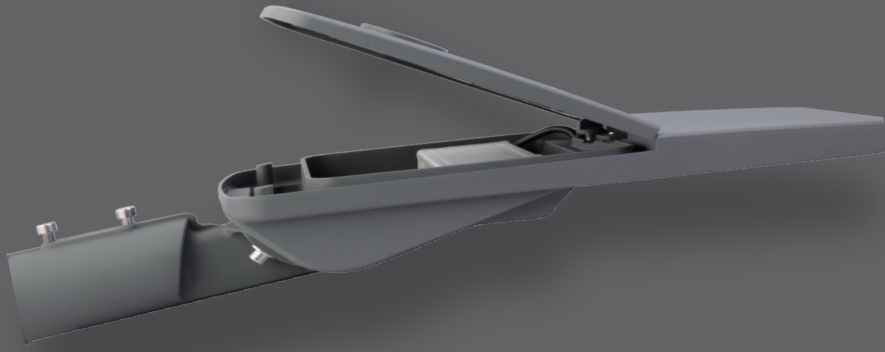


## Optionals

DALI	Available
Nema7 Holder	Available
Zhaga Holder	Available
Class I or II	Available
Marine Painting	Available
2 Step Dim	Available
1-10V	Available
External SPD (Up to 10kV)	Available

Certifications and Reports	60598-2-3, LM79, LM80, TM21, IP66, IK08-09, CE
Warranty	5 Years

# Flexible Design

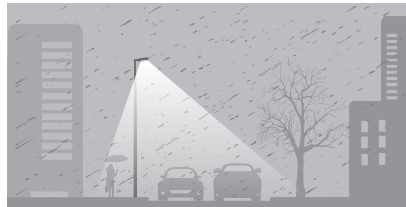
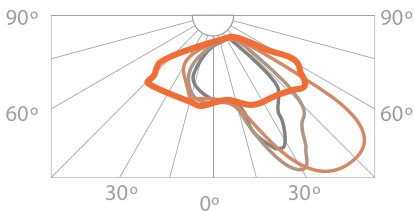


## Optical Solutions in Line with Different Fields of Application

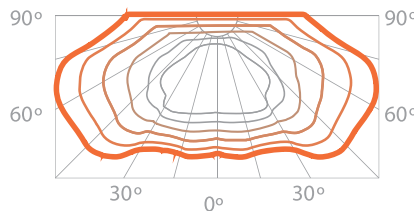
*Rio road and street luminaire offers alternative optical solutions in accordance with the specifications of TEDAŞ and lighting classes in different fields of application*



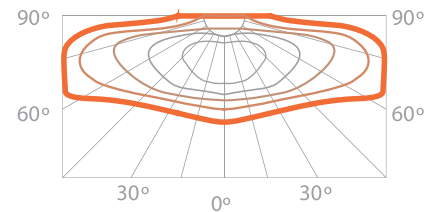
Optical solutions suitable for ME-CE class urban road-street illuminations



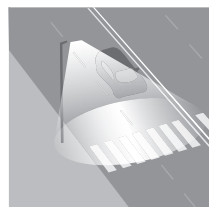
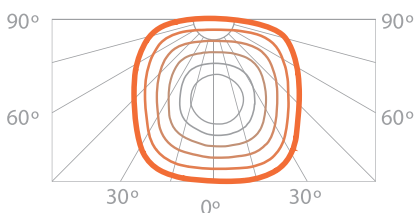
MEW class optical solutions suitable for the lighting of asphalt highways with high luminous reflectivity.



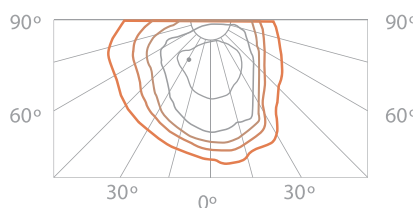
Optical solutions suitable for CE and S class fields of application in cities.



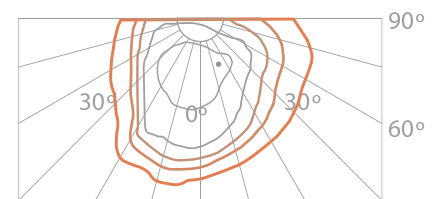
Optical solutions suitable for Square-Environment-General Lighting class

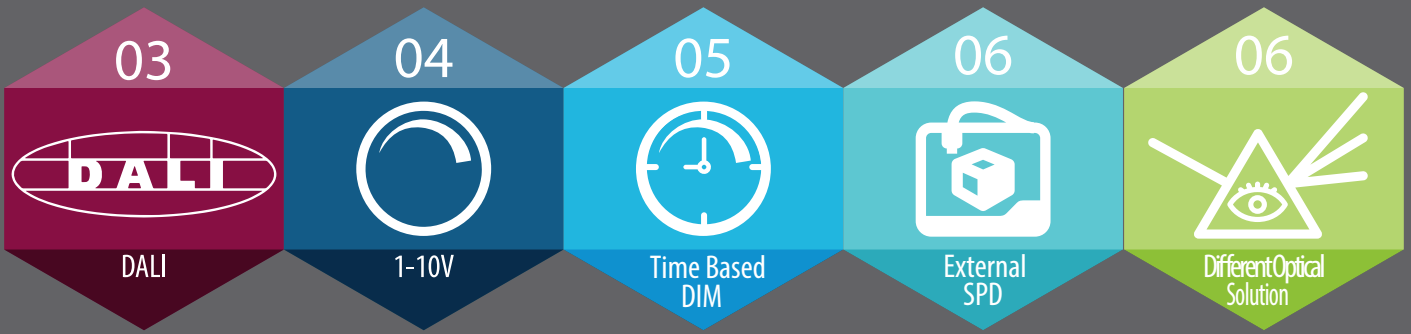


Optical solutions suitable for crosswalk lightings



Optical solutions suitable for crosswalk lightings



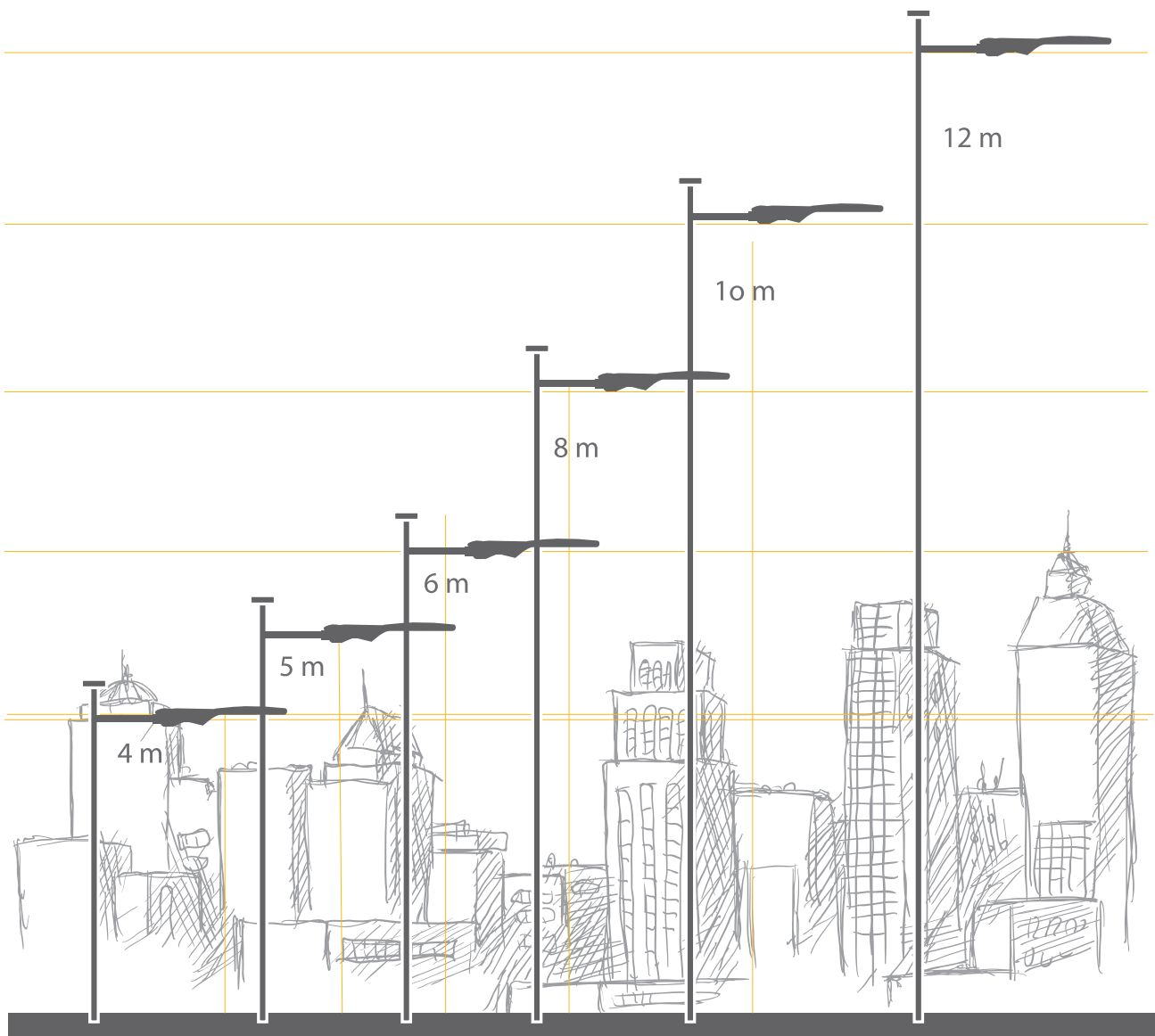


## Optional Usage Option According to Different Heights



Rio LED road and street luminaires offer alternative options with pole heights between 4-12m and different power -lumen output choices.

Power	Recommended Pole Heights
30W	4-5m
50W	4-6m
60W	5-8m
80W	6-10m
100W	8-12m



# Pelsan



All your lighting needs in one adress.

[www.pelsan.com.tr](http://www.pelsan.com.tr)

[info@pelsan.com.tr](mailto:info@pelsan.com.tr) | [export@pelsan.com.tr](mailto:export@pelsan.com.tr)

#### HEAD OFFICE

Çerkeşli O.S.B.  
İmes 5. Cadde No:12  
Dilovası / Kocaeli - TÜRKİYE



[/PelsanAydinlatma](#)



[pelsan-aydinlatma](#)



[pelsan aydinlatma](#)



[/pelsanaydinlatma](#)



[/PelsanLight](#)

**P** : +9(0850) 460 75 76

**F** : +9(0216) 364 60 15