

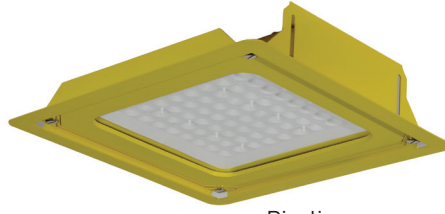
## Sia - Piroliz - Nairo Ex-Proof Serisi

### Sia - Piroliz - Nairo Ex-Proof Series



Sia

Yüksek Tavan  
Highbay



Piroliz

Kanopi  
Canopy



Nairo

Projektör  
Floodlight

Gövde Body	Elektrostatik toz boya kaplı alüminyum enjeksiyon Aluminium injection with electrostatic coating	Giriş Gerilimi Input Voltage (V)	220-240	Frekans Frequency (Hz)	50-60
LED	SMD mid power	Renk sel ger. ind. Colour Ren. In. (CRI)	>80	IP Koruma IP Protection	IP66
Optik Kapak Diffuser	IK08 koşullarını sağlayan, ısıya ve darbelere karşı korumalı, yüksek geçirgenliğe sahip, şeffaf temperli cam IK08 standard compliant, heat and impact resistant, highly transmissive, clear tempered glass	Güç Faktörü Power Fac. (cos φ)	>0.95	RAL Kodu RAL Code	1023
Sürücü Driver	Avrupa menşeli yüksek verimli European origin high efficiency	Kapsam Coverage	II 3G Ex nR 11C TS Gc II 3D Ex tc IIIC (T95°C) DC	Opsiyonlar Options	İstenilen renk sıcaklığında (CCT) LED uygulaması. Production according to desired correlated colour temperature (CCT).

### Armatürlere ait büyüklükler Product Details

Ürün Kodu Code No	Tip Type	Güç Power (W)	Işık Akısı Luminous Flux (lm)	Renk Sıcaklığı Colour Temp. (K)	Etkinlik Faktörü Luminous Effic. (lm/W)	Boyutlar Dimensions (mm) a b c	Koli Hacmi Package Vol. (m <sup>3</sup> )	Koli Adedi Pcs/Pack	Koli Ağırlığı Package Weight (kg)
106615	Sia Ex-Proof Yüksek Tavan/Highbay	50	6000	6500	120	342x342x160	0,0243	1	8
106616	Sia Ex-Proof Yüksek Tavan/Highbay	75	8625	6500	115	342x342x160	0,0243	1	8
106617	Sia Ex-Proof Yüksek Tavan/Highbay	100	11000	6500	110	342x342x160	0,0243	1	8
106618	Sia Ex-Proof Yüksek Tavan/Highbay	125	13125	6500	105	342x342x160	0,0243	1	8
106619	Sia Ex-Proof Yüksek Tavan/Highbay	150	15000	6500	100	342x342x160	0,0243	1	8
106578	Piroliz Ex-Proof Kanopi/Canopy	50	6000	6500	120	395x395x132	0,0243	1	8
106579	Piroliz Ex-Proof Kanopi/Canopy	75	8625	6500	115	395x395x132	0,0243	1	8
106580	Piroliz Ex-Proof Kanopi/Canopy	100	11000	6500	110	395x395x132	0,0243	1	8
106581	Piroliz Ex-Proof Kanopi/Canopy	125	13125	6500	105	395x395x132	0,0243	1	8
106582	Piroliz Ex-Proof Kanopi/Canopy	150	15000	6500	100	395x395x132	0,0243	1	8
106498	Nairo Ex-Proof Projektör/Floodlight	50	6000	6500	120	342x342x121	0,0243	1	8
106499	Nairo Ex-Proof Projektör/Floodlight	75	8625	6500	115	342x342x121	0,0243	1	8
106500	Nairo Ex-Proof Projektör/Floodlight	100	11000	6500	110	342x342x121	0,0243	1	8
106501	Nairo Ex-Proof Projektör/Floodlight	125	13125	6500	105	342x342x121	0,0243	1	8
106502	Nairo Ex-Proof Projektör/Floodlight	150	15000	6500	100	342x342x121	0,0243	1	8

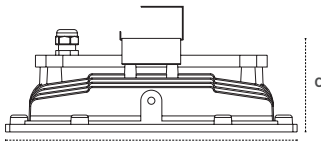


**Kullanım Alanları**  
Fields of Application



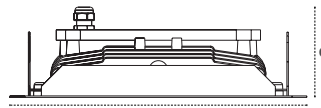
Bakınız sayfa 232 See page 232

**Teknik Çizim** Technical Drawing



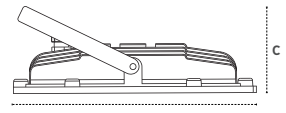
a-b

Sia



a-b

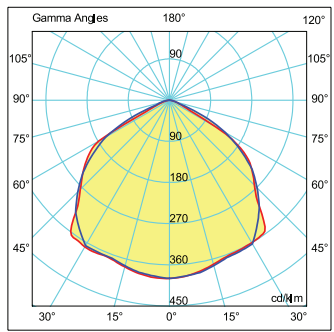
Piroliz



a-b

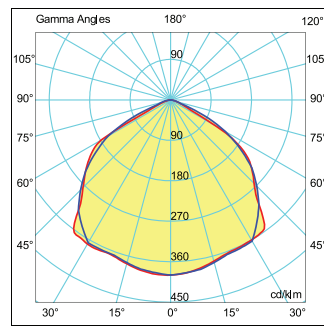
Nairo

**Işık Şiddeti Dağılım Eğrisi**  
Light Distribution Curve



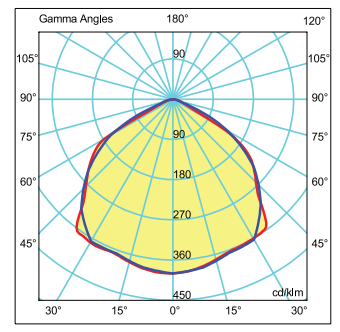
180.0 — 0.0 100W LED  $\eta$ :100.00 %

270.0 — 90.0



180.0 — 0.0 100W LED  $\eta$ :100.00 %

270.0 — 90.0



180.0 — 0.0 100W LED  $\eta$ :100.00 %

270.0 — 90.0



EN 60598-2-1 / EN 60598-2-2 / EN 60598-2-5

